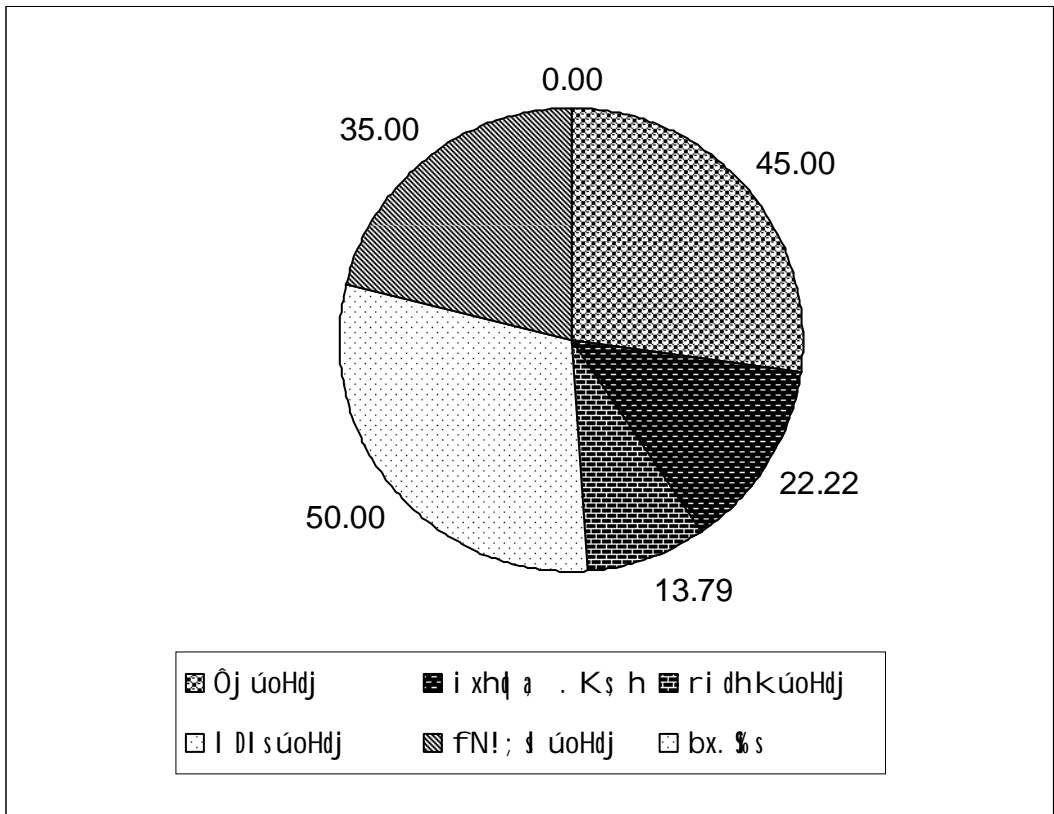


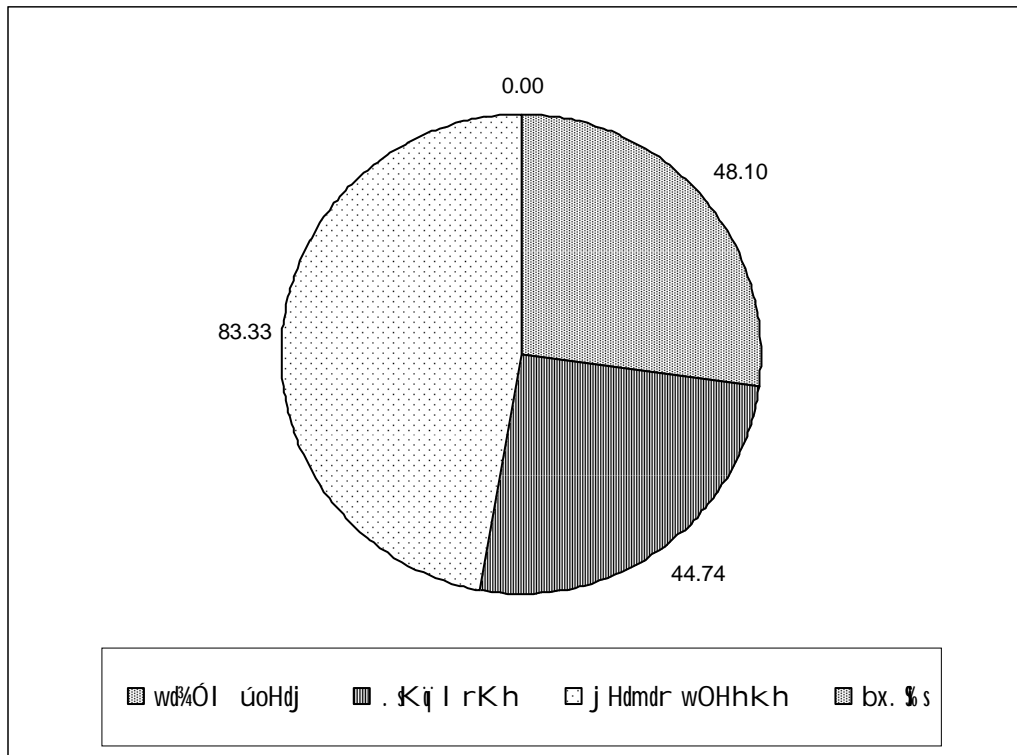
r\$ I feúg uOH uyd úoHd, h
w' fmd' i ' ^W' fm<&- 2003 m% M, úYf, d K h
úoHd wxYh

ú l h	fmkS i á . K k	A	B	C	S	W	i u; a . K k	m% Y; h]
Ôj úoHdj	20			1	8	11	9	45.00
i xhđ a . K s h	9			1	1	7	2	22.22
ri dhkúoHdj	29				4	25	4	13.79
I DI s úoHdj	10		2	1	2	5	5	50.00
fN!; d úoHdj	20			1	6	13	7	35.00
bx. % s	26					26	0	0.00



r\$ l feúg uOH uyd
 úoHd, h
 w' fmd' i ' ^W' fm<&-
 2003 m% M,
 úYf, d K h
 j dK c wxYh

ú l h	fmkS i á . Kk	A	B	C	S	F	i u; a . Kk	m% Ÿ; h]
wd%ÓI úoHdj	79	1	6	13	18	41	38	48.10
. Kij l rKh	76	6	6	5	17	42	34	44.74
j Hdmdr wOHhkh	78	5	11	17	32	13	65	83.33
bx. % s	71				1	71	0	0.00



r\$ I feúg uOH uyd
 úoHd, h
 w' fmd' i ' ^W' fm<&-
 2003 m% M,
 úYf, d K h
 I , d wxYh

ú h	fmkS i á . Kk	A	B	C	S	W	i u; a . Kk	m% Y; h]
foámd, k úoHdj	105	2	3	26	33	41	64	60.95
i xy,	138	5	20	54	31	28	110	79.71
b; ydi h	43		2	9	18	15	29	67.44
fn!oD Yá gdpdrh	43			4	12	27	16	37.21
Nf. dą úoHdj	29		4	12	8	5	24	82.76
. Dy wd%ÓI úoHdj	7		1	2		4	3	42.86
wd%ÓI úoHdj	31			1	6	24	7	22.58
Ñ; %	4		1	2	1		4	100.00
kegi	17		3	5	3	6	11	64.71
fmrĚ. i x. § h	11		1	3	2	5	6	54.55
bx. % s	135					1	134	0.74

